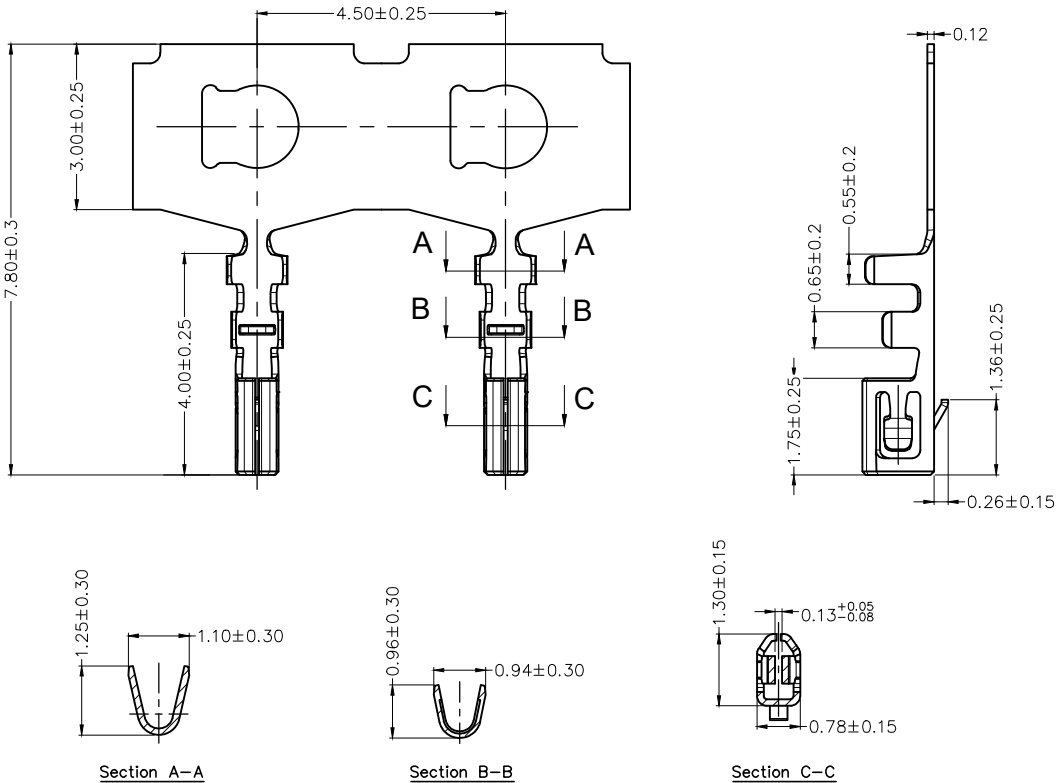


REV	LOCATIONS	DESCRIPTION	DATE	REVISER	APPD

SPECIFICATIONS

Electrical
 Current Rating: 1A AC(rms)/DC
 Voltage Rating: 50V AC(rms)/DC
 Contact Resistance: 20 mΩ Max
 Insulation Resistance: 100 MΩ MIN
 Withstanding Voltage: 250V AC r.m.s
 Temperature Range-Operating: -25°C~+85°C

Material: Phosphor Bronze
 Plating: Gold Plated
 Wire Range: 28AWG~32AWG
 Applicable Housing: FHG10007 Series

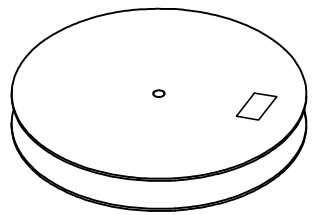
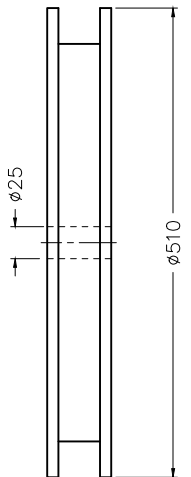
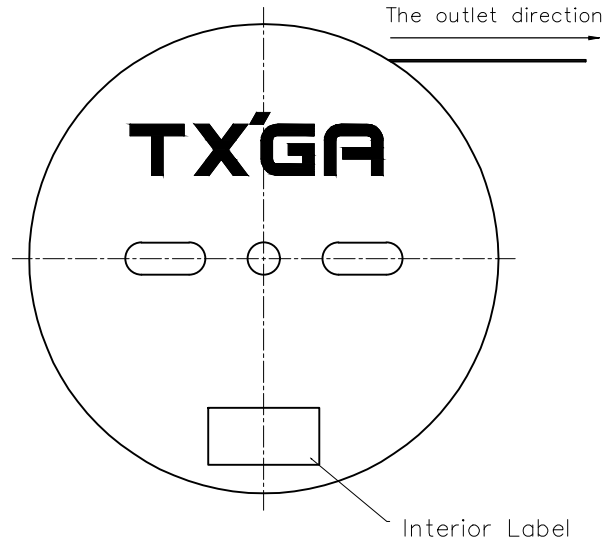


<p>THIRD ANGLE PROJECTION</p>	GENERAL TOLERANCES (UNLESS SPECIFIED)		APPROVE BY LEO	DATE 02/AUG/23	PART NO. FT10006-F1H	ITEM NO. FT10006	<p>Building Technology Cornerstone</p>
	X. ±0.30 X.X ±0.20 X.XX ±0.15 X.XXX ±0.10	X.* ±5° X.* ±2° X.XX ±1° X.XXX ±0.5°	CHECKED BY GISELLE	DATE 02/AUG/23	TITLE Wire to Board Pitch 1.0mm(Terminal)		
SCALE 5:1	SIZE A4	DRAWN BY NICK		DATE 02/AUG/23	THIS DRAWING CONTAINS INFORMATION THAT IS PROPRIETARY TO TXGA INDUSTRIAL ELECTRONICS(S.Z)CO.,LTD AND SHOULD NOT BE USED WITHOUT WRITTEN PERMISSION		

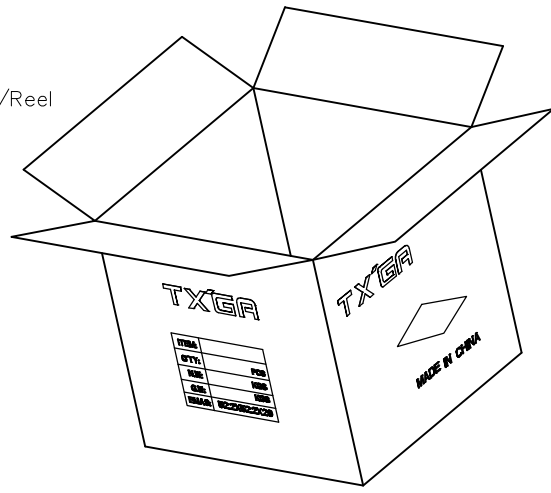
1 2 3 4 5 6 7 8

REV	LOCATIONS	DESCRIPTION	DATE	REVISER	APPD

A
B
C
D
E
F



25,000 Pcs/Reel



 THIRD ANGLE PROJECTION	GENERAL TOLERANCES (UNLESS SPECIFIED)		APPROVE BY LEO	DATE 02/AUG/23	PART NO. FT10006-F1H	ITEM NO. FT10006	 Building Technology Cornerstone
	X. ± 0.30	X.' $\pm 5^{\circ}$	CHECKED BY GISELLE	DATE 02/AUG/23	TITLE Wire to Board Pitch 1.0mm(Terminal)		
DESIGN UNITS METRIC(mm)	X.X ± 0.20	X.X' $\pm 2^{\circ}$	DRAWN BY NICK	DATE 02/AUG/23	THIS DRAWING CONTAINS INFORMATION THAT IS PROPRIETARY TO TXGA INDUSTRIAL ELECTRONICS(S.Z)CO.,LTD AND SHOULD NOT BE USED WITHOUT WRITTEN PERMISSION		
SCALE 5:1	X.XX ± 0.15	X.XX' $\pm 1^{\circ}$		SIZE A4	X.XXX ± 0.10	X.XXX' $\pm 0.5^{\circ}$	

1 2 3 4 5 6 7 8